



# PLM NEWS

PLM Lake & Land Management Corp.  
Great Lakes Division

## 2011 Review and a Look Forward... by: Jason Broekstra, Vice President

### A Look Back at 2011...

The spring of 2011 was one for the record books. Western Michigan had the wettest spring in over 100 years and the SECOND wettest EVER recorded! Also, west Michigan had several days over 85 degrees and numerous days below 40! The constant fluctuation in temperature combined with frequent rain events led to a significant delay in the aquatic growing season. Also, the weather conditions impacted our ability to manage many waterbodies this spring, in turn, delaying treatments. The heavy rains allowed for significant nutrient run off into our lakes and ponds which led to multiple spring algae blooms. It wasn't until nearly the 4<sup>th</sup> of July that summer finally arrived. When the sun came out in late June the aquatic life was "off to the races". Fortunately our dedicated PLM staff was able to quickly address plant and algae growth issues allowing you to enjoy your beautiful lakes and ponds. Despite the rocky spring, overall the 2011 season was very good. PLM received many positive comments from our customers. Whether it was directly related to the condition of your lake or the quality communication of our staff, this feedback is truly appreciated. **Thank you!**

### A Look Forward to 2012...



Although we do not know what the weather will bring in 2012 we do know this coming season will be exciting. PLM biggest news for 2012 is that we will have a new "PLM North" office located near US 131 and US 10. This new facility will be much more efficient for PLM's daily commute to our north customers, saving valuable time throughout the summer. Although, our response time in the past has been exceptional, this change will only improve our service abilities. We also hope that this will show our continued commitment to our existing northern customers as well as new waterbodies in the area. Our long time Northern Lake Manager, BreAnne Grabill, Terrestrial Manager, Dusty Grabill and Northern Lake Applicator Mitch Hiler will all be relocating their families to make this new "PLM North" office a reality.

On a less exciting note, new Federal permit requirements, NPDES (National Pollution Discharge Elimination System) is still looming and may become law yet this fall (October 31<sup>st</sup>). Currently House Bill 872 would have the ability to remove the Aquatic Industry from this additional paperwork burden. The bill has passed the House and is currently being reviewed by the Senate. We believe we have the support for approval it just needs to be voted on before the October 31<sup>st</sup> deadline. If HB 872 does not pass, PLM and all waterbodies in the State of Michigan will be subject to additional NPDES requirements. At this time PLM does not anticipate significant cost to our customers but fees will apply. If you would like more information regarding NPDES and/or to contact your local Senator for support, please contact PLM for additional details.

### New Product Updates

During the 2011 season, PLM had the opportunity to evaluate the new herbicide Clipper®. (flumioxazin). The registration of Clipper was much anticipated for its ability to control the exotic plant species Cabomba. Clipper is taken up quickly and it is not deactivated by disturbed sediments which also makes it a very good option in shallow sites or areas of high water exchange. Several applications were made on Cabomba at 200 ppb and Clipper provided excellent control. Clipper also provided good control of Curlyleaf Pondweed, Coontail, and other species at various rates, while a few native pondweed species did not meet our control expectations.

In 2012, we will continue to evaluate Clipper. Understanding how specific species respond at different rates or in combination with other products will help us better incorporate this product into your management program. In 2012, we will evaluate 2011 treatment sites to determine if we are seeing seasonal control or multi-season control of Cabomba and other species.

PLM also had the opportunity to extensively evaluate the use of Renovate Max G® and Sculpin® in 2011 treating well over 1,000 acres. These products have systemic abilities (they kill the root) and are primarily used for Eurasian watermilfoil control. Both of these products exceeded our expectation and performed very well on many lakes at different times of the year. Even better news is that these products cost less than previously used systemic products. It appears to be a win-win situation. Although we are optimistic long term control will be achieved, this cannot be confirmed until the summer of 2012.

#### CONTACT US:

PO Box 132  
Caledonia, MI 49316

*In the Grand Rapids Area:*  
8865 100 St SE  
Alto, MI 49302

*In the Lansing Area:*  
10222 Rose Blvd.  
Morrice, MI 48857

Phone: 800-382-4434

Fax: 616-891-0371

E-mail: [servicegl@plmcorp.net](mailto:servicegl@plmcorp.net)

*...Thirty years of invasive plant  
management*

***Our Customers are our Number ONE Priority... Thank you for your business!***

Fall 2011



Oscillatoria and Lyngbya are members of the cyanobacteria family. Cyanobacteria are unique in the fact that they have characteristics of both algae and bacteria. It's because of these characteristics and very strong cell wall that traditional algaecides have not been very effective in controlling this nuisance.

One of the major problems with trying to manage Oscillatoria or Lyngbya is that they thrive in an environment with a lack of plant diversity. Therefore, any unsuccessful attempt at controlling these algae's could potentially remove the more beneficial algae and plants in the waterbody and create a more ideal environment for Oscillatoria or Lyngbya to grow.

PLM Lake & Land Management has performed many experimental treatments and is still searching for a solution with more promise. We are currently working at getting more natural beneficial bacteria approved for use in Michigan. We hope to experiment with these products in an attempt to create environments that are less desirable for cyanobacteria and prevent Oscillatoria and Lyngbya growth.

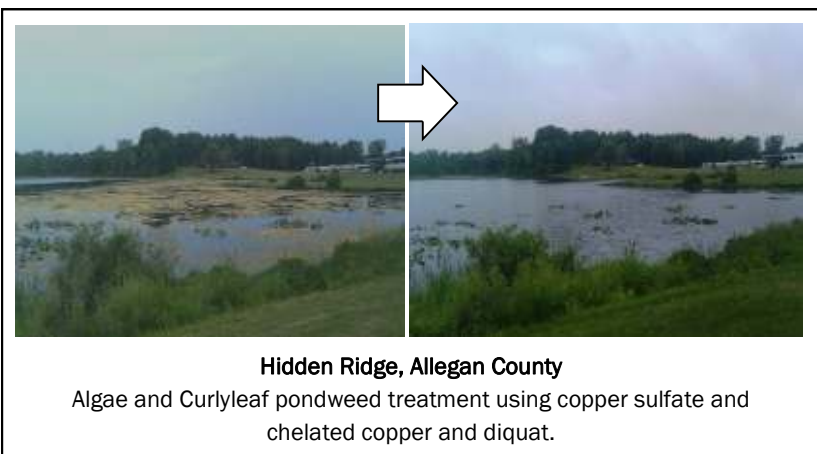
As new products become available for use, PLM will always be evaluating their efficacy and value to continually provide a better service to our customers.

## Before ... and After

*You don't take a photograph, you make it.*  
~Ansel Adams



**Gravel Lake , Van Buren County**  
Algae treatment using Copper sulfate and chelated copper.



**Hidden Ridge, Allegan County**  
Algae and Curlyleaf pondweed treatment using copper sulfate and chelated copper and diquat.

Our applicators at PLM pride themselves on the exceptional service and results we provide our customers each season. Documenting our success through "Before & After" pictures is a great way to share these accomplishments. As you can see from the photos, noxious weeds and algae have been effectively removed allowing resident's to enjoy their lakes throughout the summer months.

### Muck Digesting Pellets Prove to Be a Success!

Response for PLM MD Pellets has been very positive and the popularity of them seems to be growing exponentially. PLM MD Pellets are a safe and effective solution for muck reduction. Lake and pond front owners value the versatility in having the option to treat their own area or have PLM perform larger treatments. Also, since it is a natural product there is no need to worry about restrictions or overtreatment. For more information contact our office or the PLM website at [www.plmcorp.net](http://www.plmcorp.net).

